

at the Wadsworth Athenaeum. Kovel and Kovel, *American Country Furniture*, no. 51, for a trestle table owned by the Metropolitan Museum of Art. Nutting, *Furniture Treasury*, no. 1204.

### 34. TABLE

Massachusetts, 1680–1720

Pine top; maple turnings

H. 27 $\frac{5}{8}$ " Diam. of top 26"

N-207

**DESCRIPTION:** Circular top made in two pieces splined together; rounded edge. Deep plain skirt joined to blocked-and-turned legs by mortise and tenon; legs have symmetrical vase-and-ring turnings with extra rings above and below; ring above hemispherical feet. Four blocked-and-turned stretchers with symmetrical vase-and-ring turnings. Both leaves split and reinforced with iron strips and screws.

**PROVENANCE:** Ward, Perkins, Nadeau; used in Gen. Artemas Ward's office in the Ward homestead, Shrewsbury, Mass.



34

**REFERENCES:** Nutting, *Furniture Treasury*, nos. 949 and 1239, for tables with a similar sequence of turnings in the Wadsworth Athenaeum; also no. 961 (attributed to New Hampshire).



35

### 35. QUEEN ANNE TEA TABLE

Southern New England, possibly Rhode Island,

\*1720–1730

Curly maple

H. 27" L. of top 34 $\frac{1}{8}$ " w. of top 26 $\frac{3}{8}$ "

N-140

**DESCRIPTION:** Queen Anne style table with oval top made from two pieces of maple; rounded edge. Supported by four circular tapered legs with turned ankle and pad foot; blocked at top where it is joined by mortise and tenon to plain skirt; quarter-circular plain brackets at all corners. Sawmarks on underside of top.

**PROVENANCE:** Ward, Shumway, Nadeau; used as a tea table in Gen. Artemas Ward's study.

COMMENTS: With its extremely elegant attenuated legs, this table is representative of a type made throughout much of the eighteenth century in New England. As noted by David Barquist, these tables were often made by turners from local woods as an alternative to more expensive urban tables with carved cabriole legs. Many examples of the form have Rhode Island provenances. Providence cabinetmaker Job Danforth noted in 1788 that he had made "a Round Maple Table" for £1.12.0.

REFERENCES: Barquist, *American Tables and Looking Glasses*, no. 20. Fales, *Furniture of Historic Deerfield*, fig. 298. Greenlaw, *New England Furniture at Williamsburg*, no. 122. Levy, *An American Tea Party: Colonial Tea and Breakfast Tables, 1715–1783*, no. 9. See also Sack, *American Antiques*, 3: 782, 833; 4: 1038; 5: 1135; 6: 1517; 7: 1700; 8: 2076, 2324; 10: 2577; all have Rhode Island provenances. Job Danforth, Sr., Account book, Providence, R.I.

## 36. GATE LEG TABLE

Massachusetts, 1690–1740

Maple

H. 27 $\frac{7}{8}$ " L. of top (leaves up) 52"

w. of top (leaves up) 41"

L. of top (leaves down) 52"

w. of top (leaves down) 13 $\frac{1}{4}$ "

Overall w. (leaves down) 15"

N-231

---

DESCRIPTION: Oval top with two leaves and two gatelegs. Leaves fit against the central section with tongue-and-groove joints; undersides rough finished with adze. Central framed section, mortise and tenon construction, houses a very long drawer that slides on medial runners; drawer sides





45A



45B

candlestand with a similar turned shaft. Advertisement of Oak Hill Gallery, Dix Hills, N.Y., in *Maine Antiques Digest*, Oct. 1985, for a tilt-top table with ovolo top and spider legs attributed to Massachusetts, ca. 1780. Titus Preston, Ledger, Wallingford, Conn. William (d. 1779), Daniel, and Samuel Proud, Ledger, Providence, R.I.

EXHIBITION: "A Case for Boxes," Museum of Art, Rhode Island School of Design, Providence, R.I., 1980.

## 46. STAND

Eleazer Shirley, Bedford, New Hampshire, 1810

Maple

H. (top up) 37<sup>3</sup>/<sub>8</sub>" H. (top down) 27<sup>7</sup>/<sub>8</sub>"

L. of top 19<sup>1</sup>/<sub>4</sub>" w. of top 14"

N-303

DESCRIPTION: Tilt-top stand with oval top, inlaid satinwood oval in center; edge notched all around for decorative effect. Cleats underneath hinged by pintle to one edge of a horizontal block sitting atop shaft. Square portion of shaft penetrates block. Handwrought iron spring catch on underside of top locks top in down position. Shaft has ring, reel, and urn turnings; lower section terminates in a plain cylinder. Three bowed "spider" legs with plain feet; legs dovetailed to shaft. Red stain. Handwritten in ink on block: "Owned by / Eliza Atwood Clark / Made by Eleazer Shirley / in 1810 apprentice of / David Atwood / Cabinetmaker / Bedford N.H."

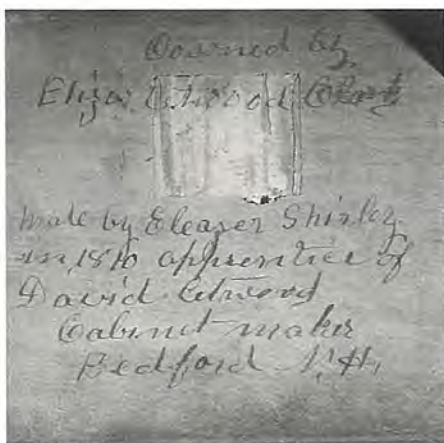
COMMENTS: Charles S. Parsons, historian of New Hampshire furniture, considered the stand to be an outstanding example of New Hampshire furniture. David Atwood, 1779-1869, worked in Bedford, N.H., ca. 1802-21. He owned a turning and shingle mill. His brother Thomas Atwood, returning from Worcester, Mass., started a furniture factory in Bedford.

REFERENCES: For Atwood, see Evans, *American Windsor Chairs*, p. 683. Charles S. Parsons, "New Hampshire Joiners and Cabinetmakers," pp. 11, 46-47, for Atwood, p. 208, for Shirley.



46

46A



47

#### 47. STAND

New England, 1800–1825

Cherry top; maple

H. 29" (top up) L. of top 21¼" w. of top 14¾"

N-1065

DESCRIPTION: Federal period tilt-top stand with elongated octagonal top attached by screws to two cleats underneath. Cleats pivot on one side of a square block; spring lock on underside of top engages nail on side of block. Vasiform shaft penetrates block; three arched "spider" legs, rectangular in section, dovetailed into cylindrical portion of shaft. Painted black overall, except underside of top which has red stain that also shows through in other locations. Decorative painting: varicolored floral bouquet (white, blue, red, green, etc.) framed by a white leaf border around edge of top; gilt stripes on legs and on shaft.

PROVENANCE: Perkins, Shumway, Nadeau



51

## 51. TABLE

Southern New England, probably eastern  
Massachusetts, \*1750–1770

Maple frame; pine top

H. 27½" L. of top 42¾" w. of top 30⅜"  
w. of frame 28" Depth of frame 22⅞"

N-508

**DESCRIPTION:** A utilitarian table with a rectangular top and a large overhang. Top is one piece of wood except for strips applied to endgrain; edges rounded. Skirt joined by mortise and tenon to blocked-and-turned legs with small ring below block and above foot; rest of leg plain turned and tapered to circular ovoid feet. One wide drawer in long side of table; sides dovetailed to front and rear; drawer bottom slides on runners nailed to sides; one wooden pull.

**PROVENANCE:** According to Achsah Ward Shumway the table was used in the buttery of Gen. Artemas Ward's home.

**COMMENTS:** Job Danforth was probably referring to a table of this type when he noted the purchase of a "3½ foot table at 9s per foot" for £1.11.6 in 1788. Long tables made of various materials were also charged by the foot, but the 3½ foot table appears to have been the standard. A mahogany version cost £3.3.0 and a cherry version £2.8.0. Danforth charged £1.13.6 for "a large kitchen table," which is what this table probably was.

**REFERENCES:** Greenlaw, *New England Furniture at Williamsburg*, no. 117, and Jobe and Kaye, *New England Furniture*, no. 57, for tables with similarly turned legs and feet. *Antiques and the Arts Weekly*, April 1987, for a tavern table owned by Lincoln and Jean Sander, Redding, Conn., with similar legs and top (illustr. in article previewing the Conn. Antiques Show). Job Danforth, Sr., Account book, Providence, R.I.