

# *Metals*

---



## 117A-C. FLATWARE

John F. Hinds, Webster, Massachusetts, ca. 1860  
Silver

### A. Teaspoon (1 of 12)

L. 5 $\frac{3}{4}$ "  
N-540.I-12

DESCRIPTION: Pointed oval bowl; upturned fiddle handle with midrib. Stamped of back of handle: "J. F. HINDS." and "WEBSTER" in roman capitals. Engraved in script on front of handle: "Shumway".

### B. Serving Spoons (2)

L. 8 $\frac{5}{8}$ "  
N-541.I-2

DESCRIPTION: Pointed oval bowls. Upturned fiddle-shaped handles with midrib. Shoulders on handles near bowl. Die-stamped in roman capitals on back of each: "J. F. HINDS" and "WEBSTER". Engraved in script on front of each spoon: "Shumway".

117 A,B,C





117 A,B,C

### C. Sugar Shell

L. 6"

N-545

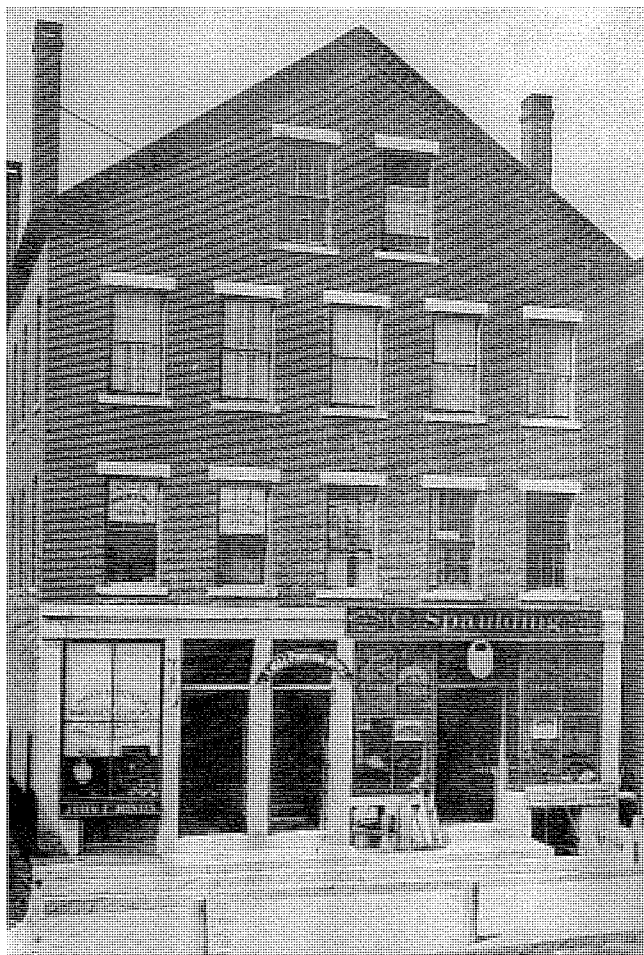
DESCRIPTION: Ovoid shell-shaped bowl with irregularly cut rim. Uprturned fiddle-shaped handle with midrib. Shoulders on handle near bowl. Die-stamped in roman capitals on back: "J. F. HINDS" and "WEBSTER". Engraved in script on front: "Shumway".

COMMENTS: Although not listed in the standard reference works on silversmiths, a John F. Hinds had a store in the Spaulding block in Webster, Mass., in the 1860s and 1870s, where he made and sold silver wares. The building still stands today. "Shumway" refers to Charles Lewis Shumway and Achsah Ward who were married November 22, 1860.

REFERENCE: *The History of Worcester County, Massachusetts*, 2: 466, mentions a John F. Hinds who was elected selectman of Webster in 1865.



117 B



*The Spaulding block in Webster, Mass. John F. Hinds occupied the shop on the first floor left.*

## 118. NAPKIN RINGS (2)

Massachusetts, ca. 1860

Silver

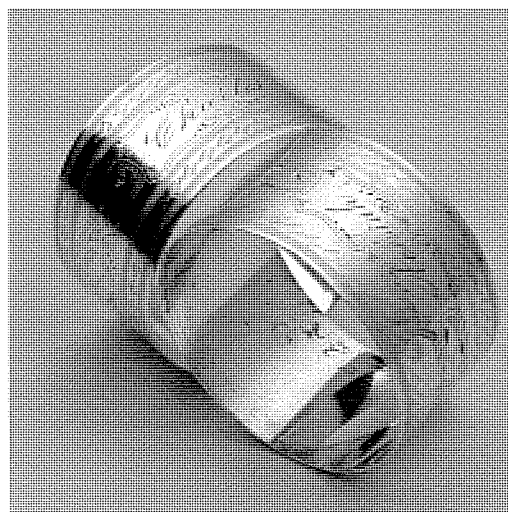
H. 1" Diam. 1 $\frac{3}{4}$ "

N-528.1, .2

DESCRIPTION: Cylindrical form made from sheet silver and soldered. Decorated on outside with wheelwork, rollerwork, and bright-cut engraving: two rows of wheelwork each side with zig-zag pattern of small rollerwork inside; interlocking cartouches interspersed with bright-cut engraving. Engraved on .1 in script: "Achsah"; on .2: "Charles".

COMMENTS: Charles Lewis Shumway (1831-1906) married Achsah Ward (1831-1903) November 22, 1860.

REFERENCE: Martyn, *William Ward Genealogy*, p. 422.



118



119

## 119. BOOT SCRAPER

New England, possibly Coventry, Connecticut,

1780-1820

Iron

H.  $6\frac{3}{8}$ " W.  $10\frac{3}{4}$ " D. 2"

N-461

front and rear legs are cut and bent into tabs at bottom for figure to stand on; each tab is pierced so figure can be screwed to a wooden surface. This is a flat piece of iron with only the head shaped in three dimensions.

PROVENANCE: Perkins, Shumway, Nadeau

COMMENTS: An extraordinary achievement with great economy of means, this object would have been regarded as a classic example of American folk art, had it found its way into the marketplace.

---

DESCRIPTION: Wrought iron figure in the shape of an abstract dog with a long tapering neck and a small head and a tapering corkscrew tail; rectangular extensions in place of



120

## 120. MASONIC PLAQUE

New England, 1780–1820

Brass

H. 7<sup>3</sup>/<sub>8</sub>" w. 6<sup>3</sup>/<sub>4</sub>"

N-605

**DESCRIPTION:** Cast circle of rope with knot at bottom; dividers and square inside with a capital G in center.

**PROVENANCE:** According to family tradition, it was owned by the Fayette Lodge, Charlton, Mass. Paul Revere reportedly gave the plaque to the lodge when he served as Grand Master. The plaque was placed on a closed bible. Fayette Lodge met at Ryders Tavern, a building later owned in part by Mrs. Leslie (Waldron) Olney who gave the plaque to RWN.

**EXHIBITIONS:** "Masonic Symbols in the Decorative Arts," Museum of Our National Heritage, Lexington, Mass., 1976. "Inherited and Collected: Decorative Arts From Rhode

Island Homes," Museum of Art, Rhode Island School of Design, Providence, R.I., 1982.

**REFERENCE:** *Masonic Symbols in the Decorative Arts*, no. 10.

## 121. WEATHERVANE

New England, ca. 1880

Copper

H. 24" w. 36" D. 12"

N-900

**DESCRIPTION:** A three-dimensional figure of a running horse, sulky, and driver. Mounted on a vertical shaft emanating from between the horse's front legs; this shaft, in turn, is set into a horizontal bar. The horizontal bar serves as the visual groundline, so that three of the four legs appear to be off the ground, while the horse's right rear extended leg is at-

tached to the bar. The two sulky wheels each have eight spokes. Shafts on each side run from axle to horse's front. Excellent detail with reins, harnesses, nails in horseshoes, etc. Mustachioed driver wearing cap sits on seat above outstretched horse's tail. Sections of horse bolted (or riveted) together. Most portions covered with verdigris; some areas are brown, perhaps where seams have been joined by solder or some other substance.

PROVENANCE: Given to Delphis J. Nadeau, RWN's father, in the late 1930s.

COMMENTS: The whole figure is brilliantly realized to suggest an actual sulky racer going full tilt. Famous trotting

horses were popularized in prints by Currier and Ives and often became models for weathervanes.

REFERENCES: Kaye, *Yankee Weathervanes*, ch. 8, for an extensive discussion of horse racing, its popularity, and the iconography associated with specific horses as expressed in prints and weathervanes. Also, see her "Cushing and White's Copper Weather Vanes," *Antiques* vol. 109, no. 6 (June 1976), pp. 1220–27. For similar, but not as well realized, examples, see Sotheby's Americana Sale, New York, January 19–21, 1996, no. 1033, stamped "Harris & Co., Boston," third quarter nineteenth century. See also Bishop and Coblenz, *A Gallery of American Weathervanes and Whirligigs*, p. 74.

